

# Testing a servlet using TTCN-3

By Bernard Stepien

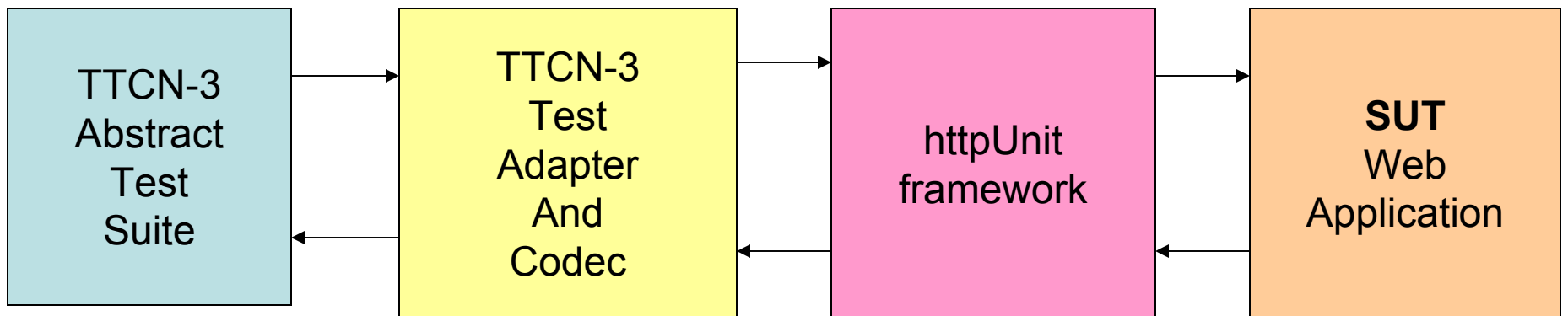
University of Ottawa

[bernard@site.uottawa.ca](mailto:bernard@site.uottawa.ca)

# Topics covered

- Invoking a web page
- Modeling web responses
- Simulating link clicking
- Modeling the shopping cart
- Simulating form submission
- Integrating TTCN-3 and httpUnit

# Separation of concerns



# Invoking a web page

In the TTCN-3 Abstract Test Specification:

```
web_port.send("http://localhost:8080/widgets/servlet");
```

In the TestAdapter:

```
static WebConversation wc;
```

In the constructor of the test adapter:

```
wc = new WebConversation();
```

```
public TriStatus triSend(..., TriMessage sendMessage) {
```

```
    String theMsg = getStringMsg( sendMessage );
```

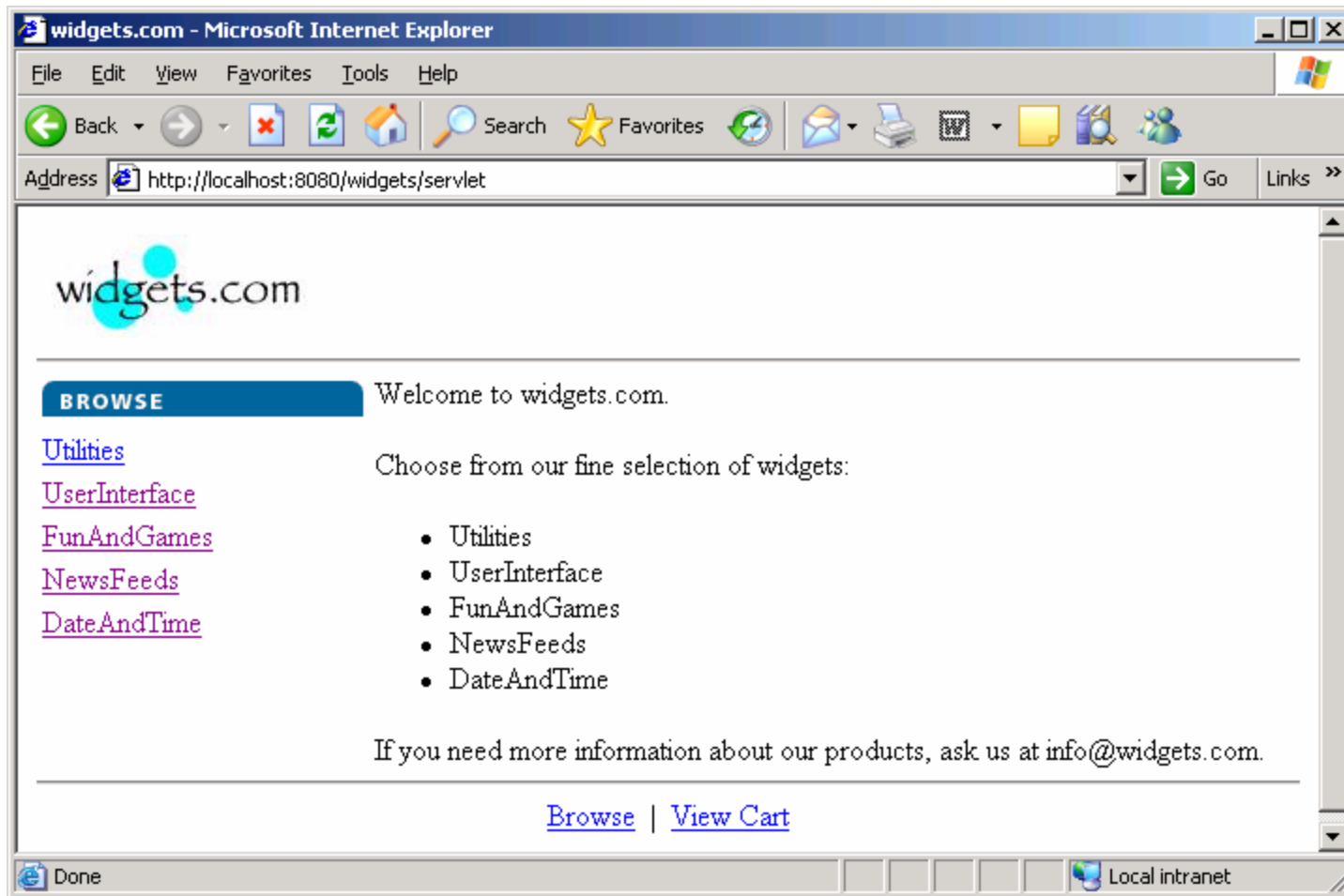
```
    WebRequest request = new GetMethodWebRequest( theMsg );
```

```
    response = wc.getResponse( request );
```

```
    ...
```

```
}
```

# The Home Page



# Modeling a web response data type

TTCN-3 types

```
type record WebResponseType {
```

```
    integer statusCode,  
    charstring title,  
    charstring content,  
    linkList links optional,  
    formSetType forms optional,  
    TableSetType tables optional
```

```
}
```

httpUnit methods

**WebResponse** class

```
getResponseCode()  
getTitle()  
getText()  
getLinks()  
getForms()  
getTables()
```

And many other elements of information depending on the test purpose

# Modeling web links

```
type record linkType {  
    charstring text,  
    charstring link  
}
```

```
<a href=/widgets/servlet/browse?action=widgets&category=Utilities>Utilities</a>
```

Links enforcement approach

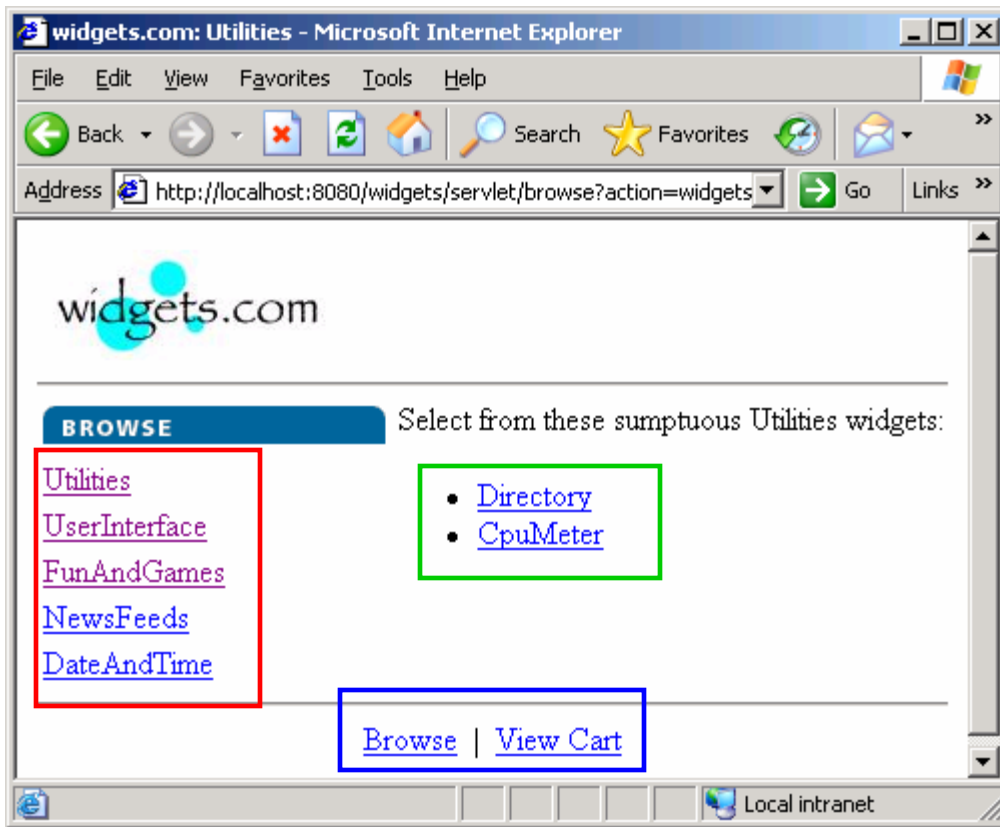
```
template linkType utilitiesTemplate := {  
    text := "Utilities",  
    link := "/widgets/servlet/browse?action=widgets&category=Utilities"  
}
```

Links discovery approach

```
template linkType utilitiesTemplate := {  
    text := "Utilities",  
    link := "?"  
}
```

```
type set of linkType linkList;
```

# Structuring templates for links



- Browse pages are composed of three groups of links:
  - **Categories**
  - **Items in a category**
  - **Home page/view cart**
- Categories and home page/view cart are constant from one page to another
- Impossible to obtain clearly separated subsets of links from httpUnit
- Solution uses set concatenation



# Structuring templates for links

```
template linkList theCategoriesLinks := {
  {text := "Utilities", link := "/widgets/servlet/browse?action=widgets&category=Utilities"},
  {text := "UserInterface", link := "/widgets/servlet/browse?action=widgets&category=UserInterface"},
  {text := "FunAndGames", link := "/widgets/servlet/browse?action=widgets&category=FunAndGames"},
  {text := "NewsFeeds", link := "/widgets/servlet/browse?action=widgets&category=NewsFeeds"},
  {text := "DateAndTime", link := "/widgets/servlet/browse?action=widgets&category=DateAndTime"}
}

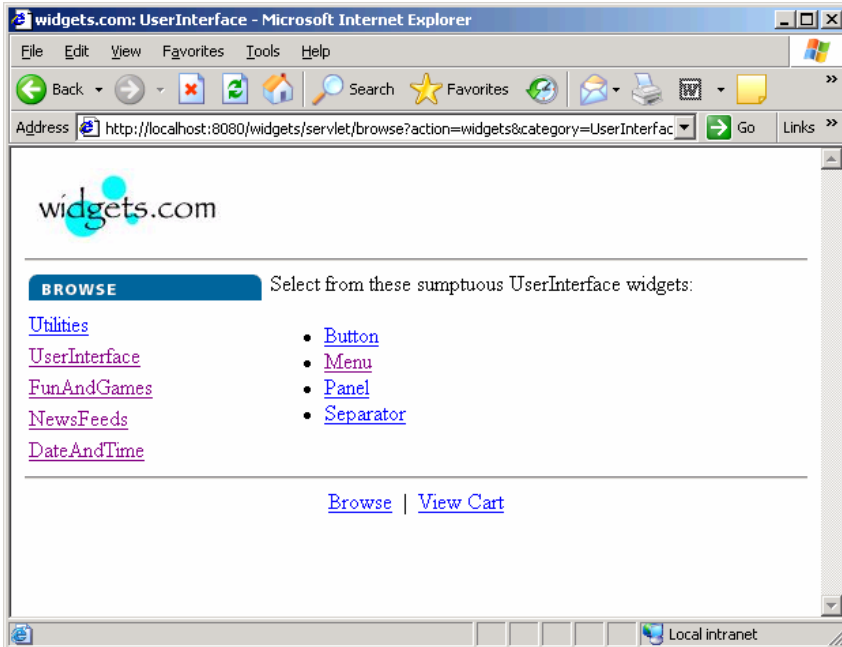
template linkList theDisplayLinks := {
  {text := "Browse", link := "/widgets/servlet/browse"},
  {text := "View Cart", link := "/widgets/servlet/browse?action=view-cart"}
}

template linkList theUtilitiesItems := {
  {text := "Directory", link := "/widgets/servlet/browse?action=details&category=Utilities&widget=Directory"},
  {text := "CpuMeter", link := "/widgets/servlet/browse?action=details&category=Utilities&widget=CpuMeter"}
}

template linkList theHomePageLinks := theDisplayLinks & theCategoriesLinks;

template linkList theUtilitiesLinks := theHomePageLinks & theUtilitiesItems;
```

# Modeling a web response templates



```
template WebPageType UserInterfaceLinksTemplate := {  
    statusCode := 200,  
    title := "widgets.com: UserInterface",  
    content := pattern "*Select from these sumptuous UserInterface widgets:*",  
    links := theUserInterfaceLinks,  
    forms := ?,  
    tables := ?  
}
```

# Modeling web response behavior

```
function BrowsePagesBehavior(WebPageType thePageTemplate) runs on PTCType {  
    alt {  
        [] web_port.receive(thePageTemplate) -> value theBrowsePageResult {  
        }  
        [] ErrorBrowseBehavior()  
    }  
}
```

Test case invocation

```
Webport.send("/widgets/servlet/browse?action=widgets&category=UserInterface");
```

```
BrowsePagesBehavior(UserInterfaceLinksTemplate );
```

...

# Simulating link clicking

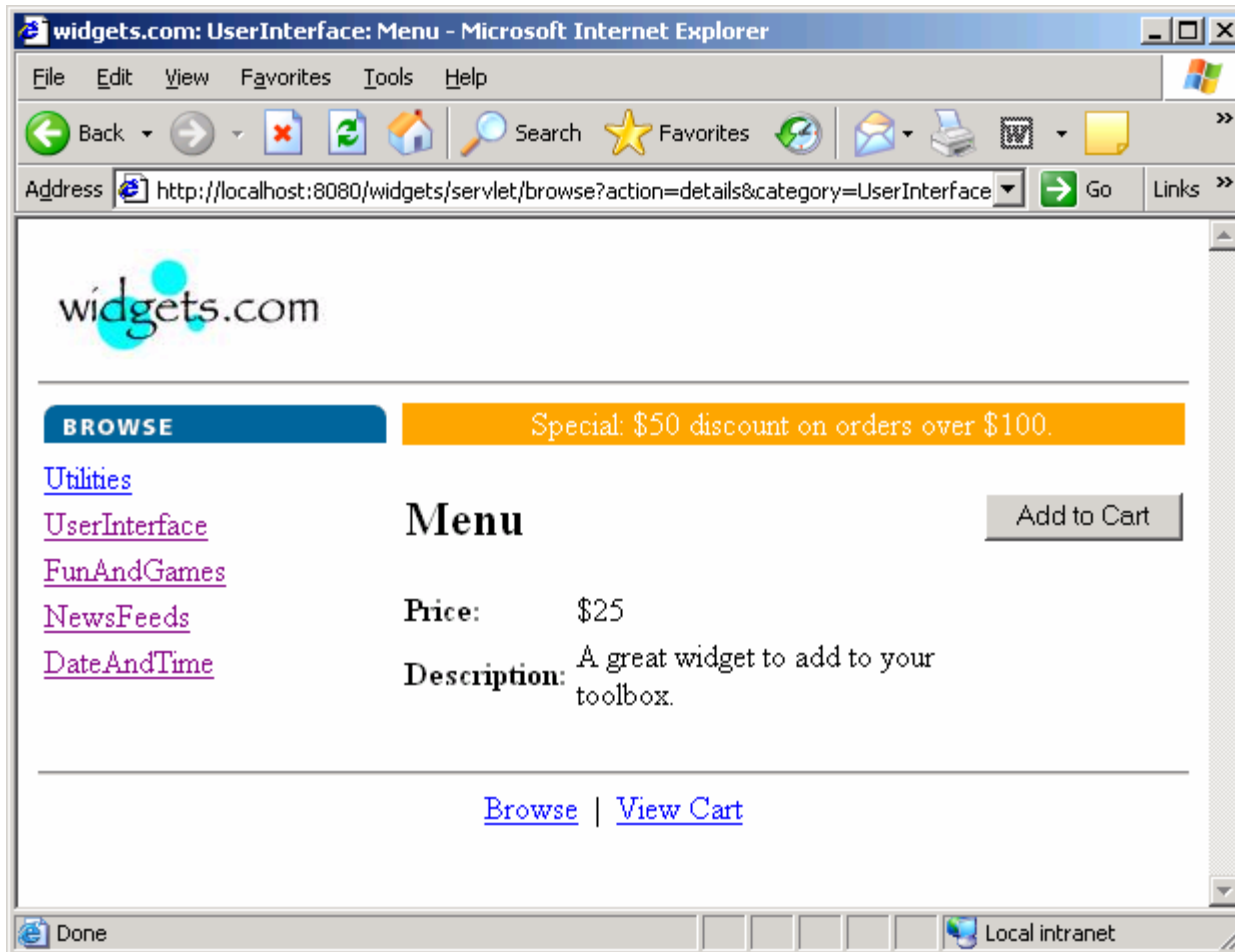
- After each response, save the collected links from the WebResponse template into a variable
- Invoke a function that searches the list of links by name and returns a URL
- Make a TTCN-3 send using the found URL

# Link clicking solution

```
Testcase BaseCaseTest() {  
    clickOnLink("Utilities");  
    UtilitiesBehavior();  
}
```

```
function clickOnLink(charstring theLinkName) runs on MTCType {  
    var charstring thePressedLink;  
  
    thePressedLink := getHref(theLinkName, theBrowsePageResult.links);  
  
    log("cliked link: " & theLinkName & " --- " & thePressedLink);  
  
    web_port.send(theBase & thePressedLink);  
}
```

# After clicking the Menu link



- This page has a form with a button to add this item to the shopping cart

# The Add-to-cart form HTML

```
<form name=details action=/widgets/servlet/browse?action=add-to-cart method=post>
  <input type=hidden name=category value=UserInterface>
  <input type=hidden name=widget value=Menu>
  <table width=100%>
    <tr>
      <td bgcolor=orange align=center> <font color=white>Special: $50 dis
    </td>
  </tr>
</table>
<br>
<table width=100%>
  <tr>
    <td colspan=2 valign=top> <h2>Menu</h2> </td>
    <td valign=top> <input type=submit value='Add to Cart'> </td>
  </tr>
  <tr>
    <td> <b>Price:</b> </td>
    <td> <span id=price>$25</span> </td>
  </tr>
  <tr>
    <td> <b>Description:</b> </td>
    <td> A great widget to add to your toolbox. </td>
  </tr>
</table>
</form>
```

# Modeling web forms in TTCN-3

```
type record browseFormType {  
    charstring name,  
    charstring formAction,  
    charstring kindMethod,  
    formElementSetType elements  
}
```

```
type record formElementType {  
    //charstring elementType,  
    charstring name,  
    charstring elementValue  
}
```

```
type set of formElementType formElementSetType;
```

```
type set of browseFormType formSetType;
```



# The Add-to-cart form template

```
template browseFormType MenuForm := {  
  name := "details",  
  formAction := "/widgets/servlet/browse?action=add-to-cart",  
  kindMethod := "post",  
  elements := {  
    {name := "category", elementValue := "UserInterface" },  
    {name := "widget", elementValue := "Menu" },  
    {name := "action", elementValue := "add-to-cart" }  
  }  
}
```

```
template WebPageType MenuTemplate := {  
  statusCode := 200,  
  title := "widgets.com: UserInterface: Menu",  
  content := pattern "*Menu*25*A great widget to add to your toolbox*",  
  links := theItemPageLinks,  
  forms := { MenuForm },  
  tables := ?  
}
```

# Executing a form submit

Dependency on **httpUnit** approach to form submission

WebForms theForms =response.getForms();

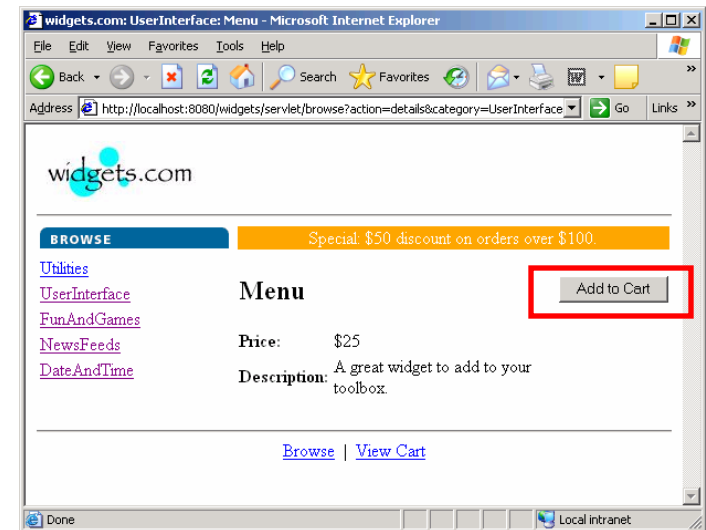
1. Get the correct form by name or using a submit button name
2. Invoke the submit button of the appropriate form

WebResponse newResponse = theForms[i].**submit("Add to Cart")**;

```
type record formSubmitType {  
    charstring formName,  
    charstring buttonName,  
    ParameterValuesSetType parameterValues  
}
```

```
template formSubmitType addToCartTemplate := {  
    formName := "details",  
    buttonName := "Add to Cart",  
    parameterValues := {}  
}
```

```
web_port.send(addToCartTemplate);
```



# After adding an item to the cart

widgets.com

**BROWSE** Special: \$50 discount on orders over \$100.

[Utilities](#) One Menu has been added to your cart.

[UserInterface](#)

[FunAndGames](#)

[NewsFeeds](#)

[DateAndTime](#)

Qty	Widget	Price
<input type="text" value="1"/>	Menu	\$25
<input type="button" value="Update"/>	<b>Total</b>	<b>\$25</b>

Ready to order?

[Browse](#) | [View Cart](#)

Display the content of the shopping cart along with the calculation of the total amount

# Testing the content of the shopping cart

- After adding a number of items we need to check that the shopping cart content displayed on the page is correct. This includes:
  - Correct quantities
  - Correct product names
  - Correct unit prices
  - Correct total to date
- Somehow we need to keep track in the ATS of what the content of the shopping cart should be
- This would save tedious manual calculations of TTCN-3 template values.

# Modeling the shopping cart data types

```
type record shoppingCartEntryType {  
    integer quantity,  
    charstring name,  
    float price  
}
```

```
type set of shoppingCartEntryType shoppingCartSetType;
```

```
type component MTCType {  
    var shoppingCartSetType theCurrentShoppingCart := {};  
    ...  
    port web web_port;  
}
```

```
addToShoppingCart(1, "Menu", 25.00);
```

# Modeling the shopping cart utilities

```
function addToShoppingCart(integer theQuantity, charstring theItem, float thePrice)
    runs on MTCType {
    var integer nbltems := sizeof(theCurrentShoppingCart);
    var integer i;

    for(i:= 0; i < nbltems; i := i+1) {
        if(theCurrentShoppingCart[i].name == theItem) {

            theCurrentShoppingCart[i].quantity :=
                theCurrentShoppingCart[i].quantity + theQuantity;
            return
        }
    }

    theCurrentShoppingCart[nbltems] := { theQuantity, theItem,
        (thePrice * int2float(theQuantity)) };
}
```



# After pressing the update button

widgets.com: Shopping Cart - Microsoft Internet Explorer

File Edit View Favorites Tools Help

Back Forward Stop Refresh Home Search Favorites

Address <http://localhost:8080/widgets/servlet/browse?action=update-cart> Go Links

widgets.com

**BROWSE** Special: \$50 discount on orders over \$100.

[Utilities](#) Your shopping cart.

[UserInterface](#)

[FunAndGames](#)

[NewsFeeds](#)

[DateAndTime](#)

Qty	Widget	Price
<input type="text" value="2"/>	Menu	\$25
<input type="button" value="Update"/>	<b>Total</b>	<b>\$50</b>

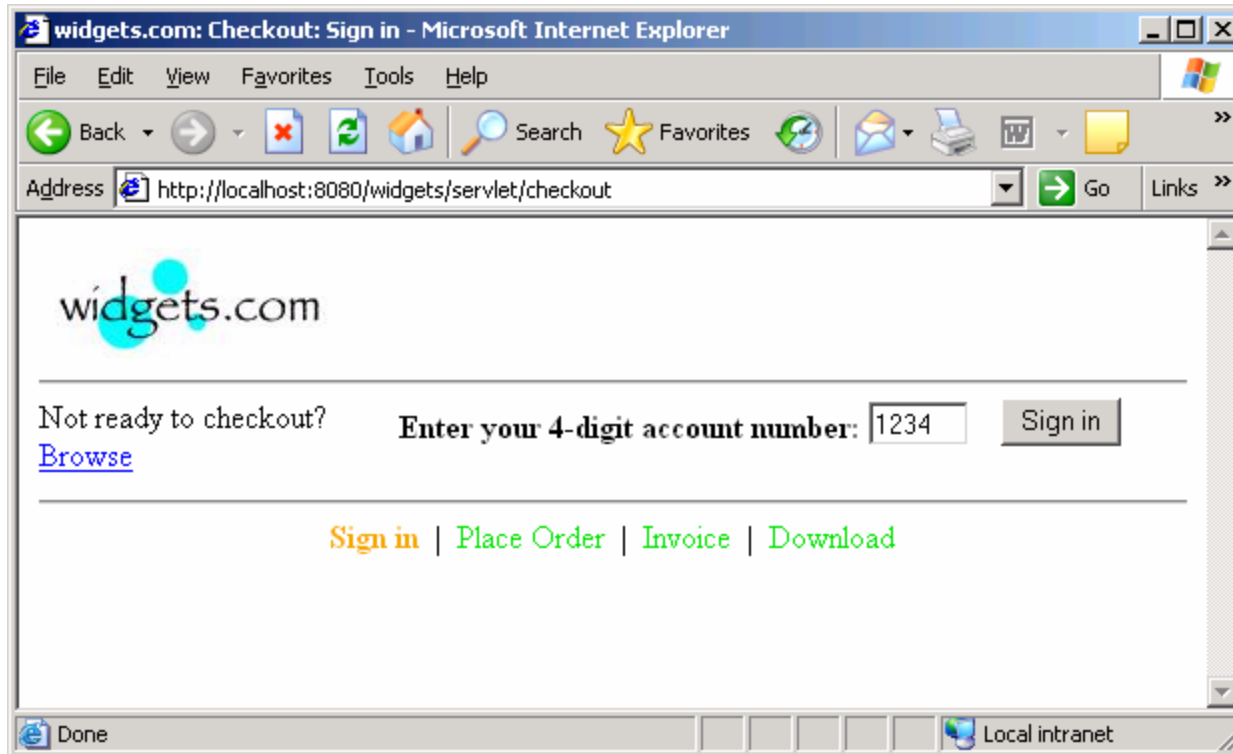
Ready to order?

[Browse](#) | [View Cart](#)

Done Local intranet



# After pressing the proceed to checkout button





# After pressing the sign-in button

widgets.com: Checkout: Place Order - Microsoft Internet Explorer

File Edit View Favorites Tools Help

Back Forward Stop Home Search Favorites Refresh Print Mail Stop

Address <http://localhost:8080/widgets/servlet/checkout?action=sign-in> Go Links

widgets.com

Not ready to checkout? [Browse](#)

Please review and submit your order.

Click the "Place Order" button to complete your order

Qty	Widget	Price
2	Menu	\$25
	<b>Subtotal</b>	<b>\$50</b>
	Discount	\$0
	<b>Total</b>	<b>\$50</b>

[Sign in](#) | [Place Order](#) | [Invoice](#) | [Download](#)

Done Local intranet

- This is a screen where the table is of interest for testing purposes

# Handling tables in TTCN-3

- Tables are used for formatting purposes.
- Tables are frequently nested.
- Tables contain information that can be obtained by other means, i.e. links.
- Tables are not always strict matrices. The span feature produces missing cells.
- The tester is usually not interested in nesting unless the purpose of the test is formatting

# Table testing solution

- De-nest tables by collecting them in a flat set
- Make a template with the table of interest and use the superset feature.
- This will mean that the set of tables found in a page shall contain at least the member of interest

# De-nesting tables

**Nested tables (HTML)**

<table border="1"><tr><td></td></tr><tr><td></td></tr><tr><td></td></tr><tr><td></td></tr></table>																	
	<table border="1"><tr><td></td><td></td><td></td><td></td></tr><tr><td></td><td></td><td></td><td></td></tr><tr><td></td><td></td><td></td><td></td></tr><tr><td></td><td></td><td></td><td></td></tr></table>																

**De-nested tables in TTCN-3**




# Table testing solution data types

```
type set of charstring RowCellSetType;
```

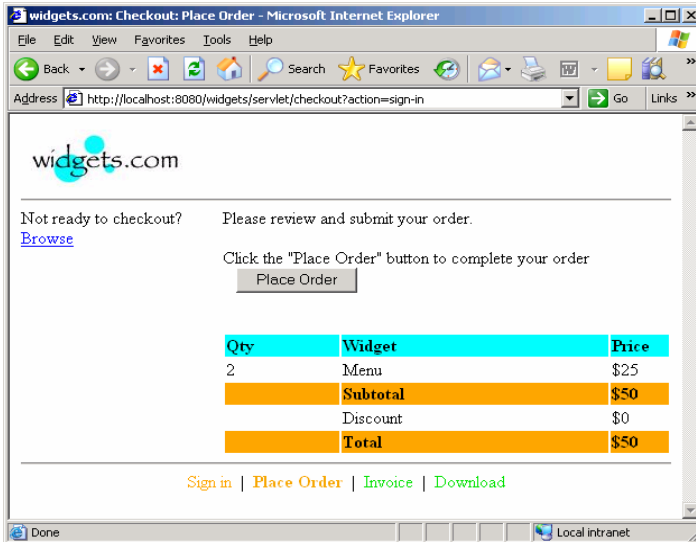
```
type record tableRowType {  
    RowCellSetType cells  
}
```

```
type set of tableRowType tableRowSetType;
```

```
type record TableType {  
    tableRowSetType rows  
}
```

```
type set of TableType TableSetType;
```

# Table testing solution templates



- The summary table containing the shopping cart items is the only table of interest
- This table will be generated from the current shopping cart content

```
template WebPageType PlaceOrderTemplate(TableType theSummaryTable) := {  
    statusCode := 200,  
    title := "widgets.com Checkout:Place Order,  
    content := "*Please review and submit your order*",  
    links := theCheckoutLinks,  
    forms := { PlaceOrderForm },  
    tables := superset ( theSummaryTable )  
}
```



# Template table content generation

```
function BuildShoppingCartTable() runs on MTCType return TableType {
    ...
    for(i:= 0; i < nbltems; i := i+1) {
        aRow := { cells := {
                                int2str(theCurrentShoppingCart[i].quantity),
                                theCurrentShoppingCart[i].name,
                                "$" & int2str(float2int(theCurrentShoppingCart[i].price))
                            }
                };
        subtotal := subtotal + (theCurrentShoppingCart[i].quantity * float2int(theCurrentShoppingCart[i].price));

        theTableRows[i+1] := aRow;
    }

    aRow := { cells := { "", "Subtotal", "$" & int2str(subtotal) } };

    theTableRows[i+1] := aRow; i := i + 1;

    if(subtotal > 100) { discount := 50}

    aRow := { cells := { "", "Discount", "$" & int2str(discount) } };

    theTableRows[i+1] := aRow; i := i + 1;
    grandtotal := subtotal - discount;
    aRow := { cells := { "", "Total", "$" & int2str(grandtotal) } };
    theTableRows[i+1] := aRow;

    theTable := { rows := theTableRows };
    return theTable;
}
```

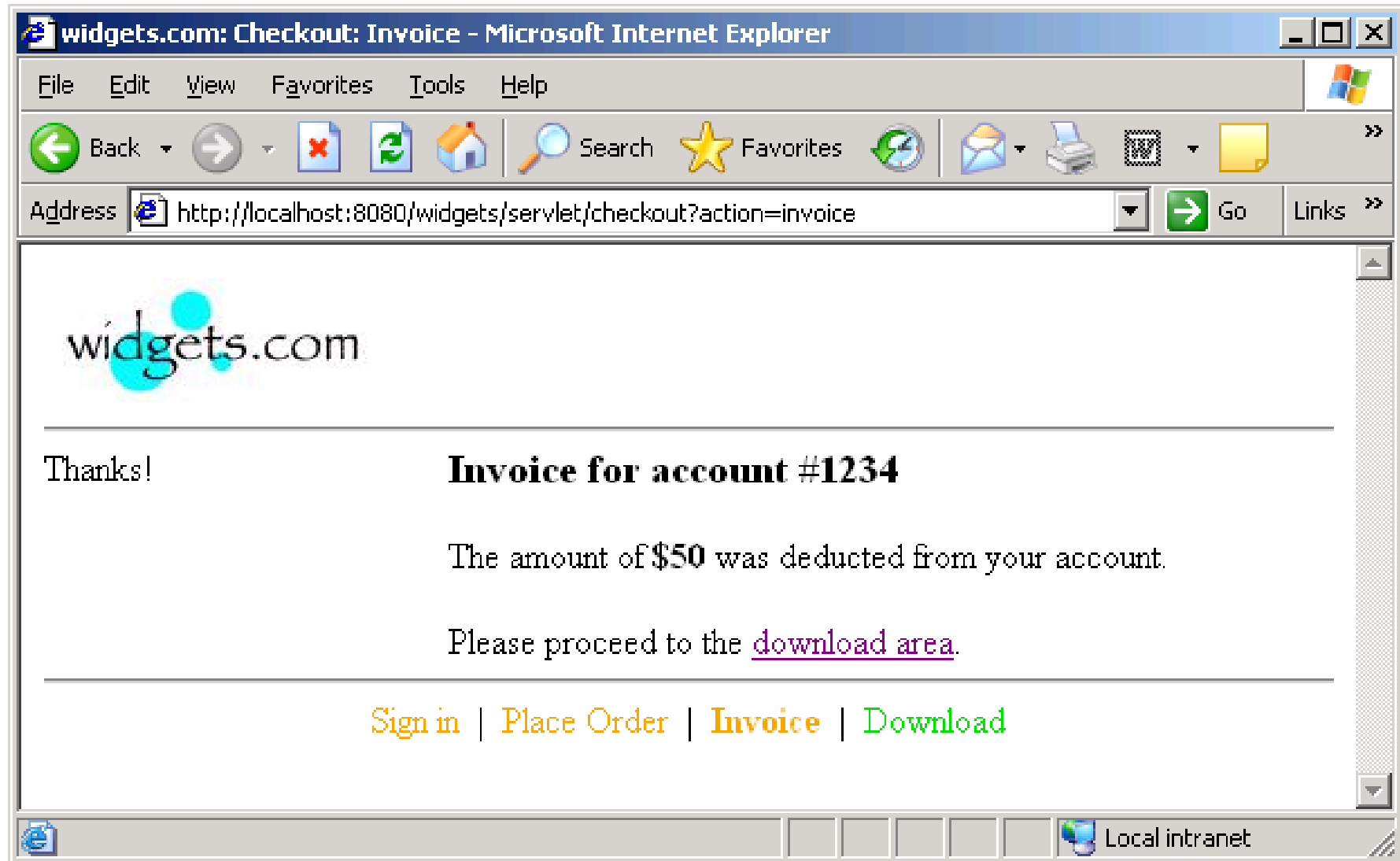
# Advantages of the parametric template

- This screen is displayed every time a user has added a product to the shopping cart
- Too tedious to compute manually
- Enables long test sequences
- Enables a great variety of test scenarios

# Table testing solution behavior

```
function PlaceOrderBehavior() runs on MTCType {  
  
  alt {  
    [] web_port.receive(PlaceOrderTemplate(BuildShoppingCartTable()))  
      -> value thePlaceOrderPage {  
        log("shopping cart is correct")  
      }  
    [] web_port.receive(IncorrectAccountTemplate) {  
      log("incorrect sign in, resubmit correct account #");  
    }  
    [] ErrorBrowseBehavior() {  
      log("unexpected message received")  
    }  
  }  
}
```

# After pressing the place order button



# A test case example

```
testcase BaseCaseTest() runs on MTCType system SystemType {  
  var charstring thePressedLink;  
  var ParameterValuesSetType theCurrentUpdateElements;  
  
  map(mtc:web_port, system:system_web_port);  
  
  web_port.send("http://localhost:8080/widgets/servlet");  
  HomePageBehavior();  
  
  clickOnLink("Browse");  
  HomePageBehavior();  
  
  clickOnLink("Utilities");  
  UtilitiesBehavior();  
  
  clickOnLink("UserInterface");  
  UserInterfaceBehavior();  
  
  clickOnLink("Menu");  
  ItemDetailsBehavior(MenuTemplate);  
  
  addToShoppingCart(1, "Menu", 25.00);  
  web_port.send(addToCartTemplate);  
  ViewCartBehavior(currentCartViewTemplate(UpdateForm(BuildShoppingCartForm())));  
  
  modifyQuantityOrdered("Menu", 2);  
  web_port.send(UpdateTemplate({ {parmName := "quantity.Menu", parmValue := "2"} }));
```

# Test case example (cont.)

```
ViewCartBehavior(currentCartViewTemplate(UpdateForm(BuildShoppingCartForm())));  
log("after updating Menu to 2 pieces");
```

```
clickOnLink("UserInterface");  
UserInterfaceBehavior();
```

```
log("purchasing a Separator");
```

```
clickOnLink("Separator");  
ItemDetailsBehavior(SeparatorTemplate);  
addToShoppingCart(1, "Separator", 10.00);  
web_port.send(addToCartTemplate);  
ViewCartBehavior(currentCartViewTemplate(UpdateForm(BuildShoppingCartForm())));
```

```
clickOnLink("FunAndGames");  
FunAndGamesBehavior();
```

```
clickOnLink("UserInterface");  
UserInterfaceBehavior();
```

```
clickOnLink("Menu");  
ItemDetailsBehavior(MenuTemplate);  
addToShoppingCart(1, "Menu", 25.00);  
web_port.send(addToCartTemplate);  
ViewCartBehavior(currentCartViewTemplate(UpdateForm(BuildShoppingCartForm())));
```

# Test case example (cont.)

```
clickOnLink("NewsFeeds");  
NewsFeedsBehavior();
```

```
clickOnLink("UserInterface");  
UserInterfaceBehavior();
```

```
log("purchasing a Separator");
```

```
clickOnLink("Separator");  
ItemDetailsBehavior(SeparatorTemplate);  
addToShoppingCart(1, "Separator", 10.00);  
web_port.send(addToCartTemplate);  
ViewCartBehavior(currentCartViewTemplate(UpdateForm(BuildShoppingCartForm())));
```

```
clickOnLink("UserInterface");  
UserInterfaceBehavior();
```

```
log("purchasing a Button");  
clickOnLink("Button");  
ItemDetailsBehavior(ButtonTemplate);  
addToShoppingCart(1, "Button", 10.00);  
web_port.send(addToCartTemplate);  
ViewCartBehavior(currentCartViewTemplate(UpdateForm(BuildShoppingCartForm())));
```

```
clickOnLink("DateAndTime");  
DateAndTimeBehavior();
```

# Test case example (cont.)

```
clickOnLink("UserInterface");  
UserInterfaceBehavior();
```

```
log("purchasing a Panel");  
clickOnLink("Panel");  
ItemDetailsBehavior(PanelTemplate);  
addToShoppingCart(1, "Panel", 15.00);
```

```
web_port.send(addToCartTemplate);  
ViewCartBehavior(currentCartViewTemplate(UpdateForm(BuildShoppingCartForm())));
```

```
clickOnLink("UserInterface");  
UserInterfaceBehavior();
```

```
log("purchasing a Button");  
clickOnLink("Button");  
ItemDetailsBehavior(ButtonTemplate);  
addToShoppingCart(1, "Button", 10.00);  
web_port.send(addToCartTemplate);  
ViewCartBehavior(currentCartViewTemplate(UpdateForm(BuildShoppingCartForm())));
```

```
web_port.send(checkoutTemplate);  
SignInBehavior();
```

```
// first send the incorrect account # 15  
web_port.send(SignInIncorrectSubmitTemplate);  
PlaceOrderBehavior();
```



# Test case example (cont.)

```
// send a correct account # 1234  
web_port.send(SignInSubmitTemplate);  
PlaceOrderBehavior();
```

```
web_port.send(confirmTemplate);  
InvoiceBehavior();
```

```
ShowShoppingCart();
```

```
setverdict(pass);
```

```
}
```

# Integrating TTCN-3 and httpUnit

- Takes place in the test adapter/codec layer
- Primary activity is to transform TTCN-3 abstract data into concrete data
- Then use the concrete data when invoking httpUnit methods
- httpUnit has an influence on design of TTCN-3 data types, templates and behavior

# Extracting data using httpUnit in the codec

```
int theStatus = theAdapterInstance.response.getResponseCode();  
theStatusValue.setInt(theStatus);
```

```
String theTitle = theAdapterInstance.response.getTitle();  
theTitleValue.setString(theTitle);
```

```
String theContent = theAdapterInstance.response.getText();  
theContentValue.setString(theContent);
```

```
theLinksValue = ExtractLinks(theWebPageValue);  
theFormsValue = ExtractForms(theWebPageValue);  
theTablesValue = ExtractTables(theWebPageValue);
```

# Form submit using httpUnit

```
SubmitButton[] theSubmitButtons = theCurrentForms[iform].getSubmitButtons();
```

```
SubmitButton theSubmitButton = null;
```

```
for(int i=0; i < theSubmitButtons.length; i++) {  
    theSubmitButton = theSubmitButtons[i];  
  
    if(theSubmitButton.getValue().equals(theFormButton)) {  
        response = theCurrentForms[iform].submit(theSubmitButton);  
  
        break;  
    }  
}
```

# TTCN-3 module editor

The screenshot displays the TTCN-3 Development IDE interface. The main editor window shows the code for the `widgetsTemplates` module. The code includes imports from `webDataTypes` and defines several link lists for navigation purposes.

```
module widgetsTemplates {  
  
    import from webDataTypes all;  
  
    // template definitions  
  
    template charstring theBase := "http://localhost:8080";  
  
    template linkList theCategoriesLinks := (  
        {text := "Utilities", link := "/widgets/servlet/browse"},  
        {text := "UserInterface", link := "/widgets/servlet/browse"},  
        {text := "FunAndGames", link := "/widgets/servlet/browse"},  
        {text := "NewsFeeds", link := "/widgets/servlet/browse"},  
        {text := "DateAndTime", link := "/widgets/servlet/browse"}  
    );  
  
    template linkList theDisplayLinks := (  
        {text := "Browse", link := "/widgets/servlet/browse"},  
        {text := "View Cart", link := "/widgets/servlet/browse"}  
    );  
  
    template linkList theHomePageLinks := theDisplayLinks & theCategoriesLinks;  
  
    template linkList theItemPageLinks := theDisplayLinks & theCategoriesLinks;  
};
```

The Package Explorer on the left shows the project structure, including the `widgetsTemplates.ttcn3` file. The Problems/Console window at the bottom shows 100 warnings, indicating that several imported types are never used.

Description	Resource	In Folder
The import org.etsi.ttcn.tci.BooleanValue is never used	web_sys...	Recursive_we
The import org.etsi.ttcn.tci.CharstringValue is never used	web_sys...	Recursive_we
The import org.etsi.ttcn.tci.FloatValue is never used	web_sys...	Recursive_we
The import org.etsi.ttcn.tci.IntegerValue is never used	web_sys...	Recursive_we
The import org.etsi.ttcn.tci.RecordValue is never used	web svst...	Recursive we

# Test execution text view

The screenshot displays the 'TTCN-3 Execution Management' window in TTworkbench Basic. The window title is 'widget\_servlet\_testing.ttcn3'. The menu bar includes File, Edit, Source, Navigate, Search, Project, Run, Window, and Help. The toolbar contains various icons for file operations and execution. The main area is divided into three tabs: 'TTCN-3 Graphical Logging', 'TTCN-3 Textual Logging' (which is active), and 'Console'. The 'Textual Logging' tab shows a list of log entries with columns for Time and Message. The messages describe the execution of a test case, including message exchanges between components and the final verdict.

Time	Message
14:45:36.171	Message received at #MTC.web_port matches
14:45:36.328	"matched : UserInterface"
14:45:36.328	"clicked link: UserInterface --- /widgets/servlet/browse?action=widgets&category=UserInterface"
14:45:36.328	Component MTC sending message
14:45:36.671	Enqueued message at #MTC.web_port
14:45:36.843	Message received at #MTC.web_port matches
14:45:37.000	"purchasing a Button"
14:45:37.093	"matched : Button"
14:45:37.203	"clicked link: Button --- /widgets/servlet/browse?action=details&category=UserInterface&widget=Button"
14:45:37.296	Component MTC sending message
14:45:37.484	Enqueued message at #MTC.web_port
14:45:37.765	Message received at #MTC.web_port matches
14:45:37.937	Component MTC sending message
14:45:38.125	Enqueued message at #MTC.web_port
14:45:38.281	Message received at #MTC.web_port matches
14:45:38.453	Component MTC sending message
14:45:38.625	Enqueued message at #MTC.web_port
14:45:38.796	Message received at #MTC.web_port matches
14:45:38.937	Component MTC sending message
14:45:39.937	Enqueued message at #MTC.web_port
14:45:40.140	Message received at #MTC.web_port does not match
14:45:40.296	Message received at #MTC.web_port matches
14:45:40.359	"incorrect sign in, resubmit correct account #"
14:45:40.359	Component MTC sending message
14:45:40.765	Enqueued message at #MTC.web_port
14:45:40.953	Message received at #MTC.web_port matches
14:45:41.109	Component MTC sending message
14:45:42.625	Enqueued message at #MTC.web_port
14:45:42.796	Message received at #MTC.web_port matches
14:45:43.046	"purchased item: 3 : Menu = 25"
14:45:43.156	"purchased item: 2 : Separator = 10"
14:45:43.281	"purchased item: 2 : Button = 10"
14:45:43.421	"purchased item: 1 : Panel = 15"
14:45:43.531	Set verdict 'pass' for component 'MTC'
14:45:43.609	Test case terminated with verdict 'pass'
14:45:43.609	Test component #MTC terminated with verdict 'pass'

# Analyzing the match of templates

TTCN-3 Execution Management - widget\_servlet\_testing.ttcn3 - TTworkbench Basic

File Edit Source Navigate Search Project Run Window Help

Test Data View x Dump View

Expected TTCN-3 Template

TTCN-Type	User Type	Name	Value
record	WebPageType		
integer	int	statusCode	200
charstring	charstring	title	widgets.com: UserInterface: ...
charstring	charstring	content	*
set_of	linkList	links	
reco	linkType	0	
charstring	text		Browse
charstring	link		/widgets/servlet/browse
reco	linkType	1	
charstring	text		View Cart
charstring	link		/widgets/servlet/browse?acti...
reco	linkType	2	
charstring	text		Utilities
charstring	link		/widgets/servlet/browse?acti...
reco	linkType	3	
charstring	text		UserInterface
charstring	link		/widgets/servlet/browse?acti...
reco	linkType	4	
charstring	text		FunAndGames
charstring	link		/widgets/servlet/browse?acti...
reco	linkType	5	
charstring	text		NewsFeeds
charstring	link		/widgets/servlet/browse?acti...
reco	linkType	6	
charstring	text		DateAndTime
charstring	link		/widgets/servlet/browse?acti...
set_of	formSetType	forms	
reco	browseForm...	0	
charstring	name		details
charstring	formAction		/widgets/servlet/browse?acti...
charstring	kindMethod		post
formElement...	elements		
formElement...	0		
charstring	name		category
charstring	elementValue		UserInterface

Data

TTCN-Type	User Type	Name	Value
record	WebPageType		
integer	int	statusCode	200
charstring	charstring	title	widgets.com: UserInterface: ...
charstring	charstring	content	&lt;!- BEG header --&gt;□&lt;...>
set_of	linkList	links	
reco	linkType	0	
charstring	text		Utilities
charstring	link		/widgets/servlet/browse?acti...
reco	linkType	1	
charstring	text		UserInterface
charstring	link		/widgets/servlet/browse?acti...
reco	linkType	2	
charstring	text		FunAndGames
charstring	link		/widgets/servlet/browse?acti...
reco	linkType	3	
charstring	text		NewsFeeds
charstring	link		/widgets/servlet/browse?acti...
reco	linkType	4	
charstring	text		DateAndTime
charstring	link		/widgets/servlet/browse?acti...
reco	linkType	5	
charstring	text		Browse
charstring	link		/widgets/servlet/browse
reco	linkType	6	
charstring	text		View Cart
charstring	link		/widgets/servlet/browse?acti...
set_of	formSetType	forms	
reco	browseForm...	0	
charstring	name		details
charstring	formAction		/widgets/servlet/browse?acti...
charstring	kindMethod		post
formElement...	elements		
formElement...	0		
charstring	name		action
charstring	elementValue		add-to-cart

Time: 14:45:37.765

# conclusions

- TTCN-3 is very adequate for servlet testing
- Adapter/codec can be re-used for unlimited number of different web application testing
- Both ATS and adapter/codec can be seen as a TTCN-3 framework that would allow the rapid development of a wide variety of web or e-commerce applications
- TTCN-3 is very flexible and allows the development of all kinds of testing features.