

# Object-Oriented Software Engineering

Practical Software Development using UML and Java

## Chapter 3: Basing Software Development on Reusable Technology

www.lloseng.com

## 3.1 Building on the Experience of Others

Software engineers should avoid re-developing software already developed

Types of reuse:

Reuse of expertise

Reuse of standard designs and algorithms

Reuse of libraries of classes or procedures

Reuse of powerful commands built into languages and operating systems

Reuse of frameworks

Reuse of complete applications

© Lethbridge/Laganière 2001

Chap. 3: Basing Development on Reusable  
Technology

2

## 3.2 Reusability and Reuse in SE

*Reuse* and design for *reusability* should be part of the culture of software development organizations

But there are problems to overcome:

Why take the extra time needed to develop something that will benefit *other* projects/customers?

Management may only reward the efforts of people who create the visible 'final products'.

Reusable software are often created in a hurry and without enough attention to quality.

www.lloseng.com

© Lethbridge/Laganière 2001

Chap. 3: Basing Development on Reusable  
Technology

3

## A vicious cycle

Developers tend not develop high quality reusable components, so there is often little to reuse

To solve the problem, recognize that:

This vicious cycle costs money

*Investment* in reusable code is important

Attention to *quality* of reusable components is essential

—So that potential reusers have confidence in them

—The quality of a software product is only as good as its lowest-quality reusable component

Developing reusable components can often simplify design

© Lethbridge/Laganière 2001

Chap. 3: Basing Development on Reusable  
Technology

4

### 3.3 Frameworks: Reusable Subsystems

A *framework* is reusable software that implements a generic solution to a generalized problem.

It provides common facilities applicable to different application programs.

*Principle:* Applications that do different, but related, things tend to have quite similar designs



### Frameworks to promote reuse

A framework is intrinsically *incomplete*

Certain classes or methods are used by the framework, but are missing (*slots*)

Some functionality is optional

— Allowance is made for developer to provide it (*hooks*)

Developers use the *services* that the framework provides

— Taken together the services are called the Application Program Interface (*API*)



### Object-oriented frameworks

In the object oriented paradigm, a framework is composed of a library of classes.

The API is defined by the set of all public methods of these classes.

Some of the classes will normally be abstract



### Examples of frameworks

A framework for payroll management

A framework for frequent buyer clubs

A framework for university registration

A framework for e-commerce web sites

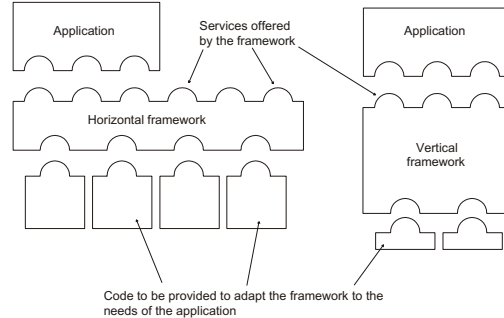
A framework for controlling microwave ovens



## Types of frameworks

A *horizontal* framework provides general application facilities that a large number of applications can use

A *vertical* framework (*application framework*) is more 'complete' but still needs some slots to be filled to adapt it to specific application needs



## 3.4 The Client-Server Architecture

A *distributed system* is a system in which:  
computations are performed by *separate programs*  
... normally running on separate pieces of hardware  
... that *co-operate* to perform the task of the system.

**Server:**

A program that provides a service for other programs that connect to it using a communication channel

**Client**

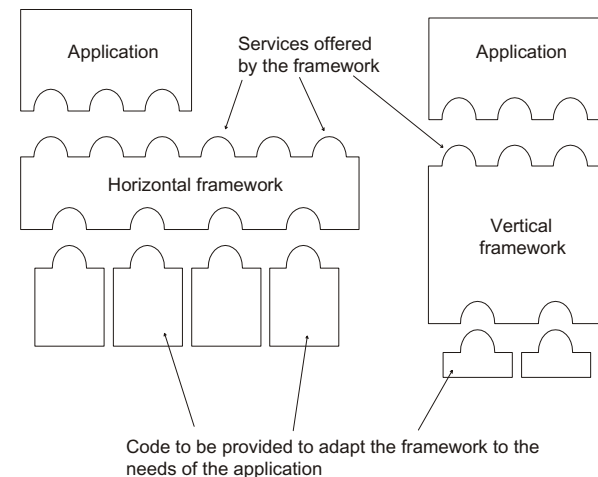
A program that accesses a server (or several servers) to obtain services

A server may be accessed by many clients simultaneously

## Sequence of activities in a client-server system

1. The server starts running
2. The server waits for clients to connect. (*listening*)
3. Clients start running and perform operations
  - Some operations involve requests to the server
4. When a client attempts to connect, the server accepts the connection (if it is willing)
5. The server waits for messages to arrive from connected clients
6. When a message from a client arrives, the server takes some action in response, then resumes waiting
7. Clients and servers continue functioning in this manner until they decide to shut down or disconnect

## A server program communicating with two client programs



## Alternatives to the client server architecture

Have a *single program* on one computer that does everything

Have *no communication*

— Each computer performs the work separately

Have some mechanism other than client-server communication for exchanging information

—E.g. one program writes to a database; the other reads from the database

www.lloseng.com

© Lethbridge/Laganière 2001

Chap. 3: Basing Development on Reusable Technology

13

## Advantages of client-server systems

The work can be *distributed* among different machines  
The clients can access the server's functionality from a *distance*

The client and server can be *designed separately*  
They can both be *simpler*

All the *data can be kept centrally* at the server

Conversely, *data can be distributed* among many different geographically-distributed clients or servers

The server can be accessed *simultaneously* by many clients

*Competing clients can be written* to communicate with the same server, and vice-versa

www.lloseng.com

© Lethbridge/Laganière 2001

Chap. 3: Basing Development on Reusable Technology

14

## Example of client-server systems

The World Wide Web

Email

Network File System

Transaction Processing System

Remote Display System

Communication System

Database System

www.lloseng.com

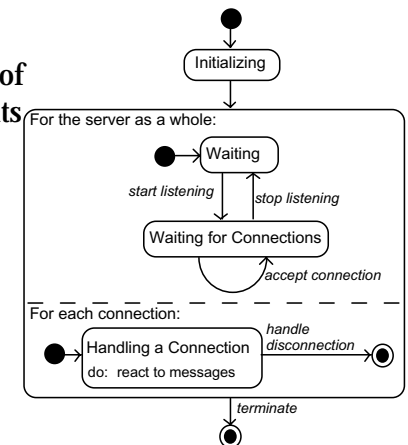
© Lethbridge/Laganière 2001

Chap. 3: Basing Development on Reusable Technology

15

## Activities of a server

1. Initializes itself
2. Starts listening for clients
3. Handles the following types of events originating from clients
  1. accepts connections
  2. responds to messages
  3. handles client disconnection
4. May stop listening
  1. Must cleanly terminate



www.lloseng.com

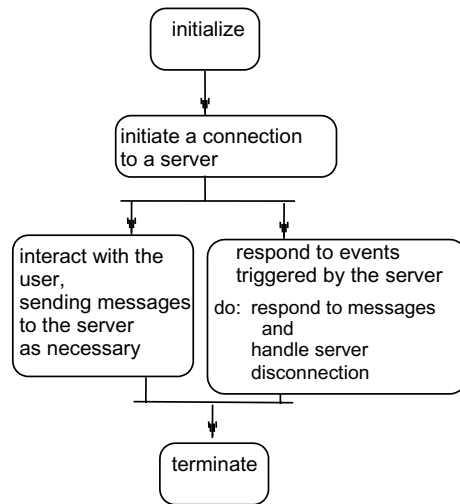
© Lethbridge/Laganière 2001

Chap. 3: Basing Development on Reusable Technology

16

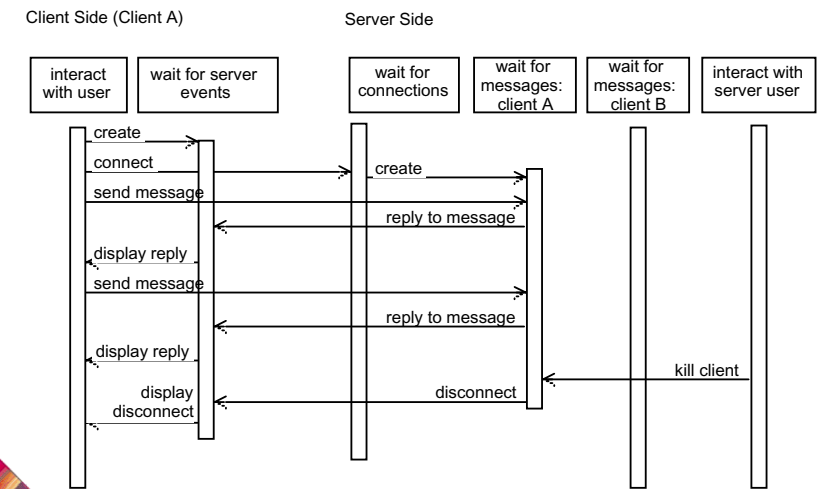
## Activities of a client

1. **Initializes itself**
2. **Initiates a connection**
3. **Sends messages**
4. **Handles the following types of events originating from the server**
  1. **responds to messages**
  2. **handles server disconnection**
5. **Must cleanly terminate**



www.lloseng.com

## Threads in a client-server system



www.lloseng.com

## Thin- versus fat-client systems

### *Thin-client* system (a)

Client is made as small as possible

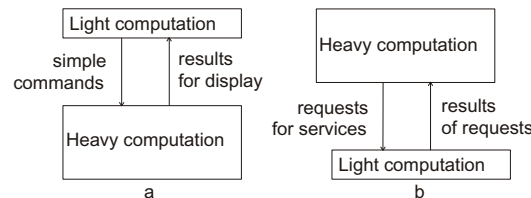
Most of the work is done in the server.

Client easy to download over the network

### *Fat-client* system (b)

As much work as possible is delegated to the clients.

Server can handle more clients



www.lloseng.com

## Communications protocols

The messages the client sends to the server form a *language*.

— The server has to be programmed to understand that language.

The messages the server sends to the client also form a language.

— The client has to be programmed to understand that language.

When a client and server are communicating, they are in effect having a conversation using these two languages

The two languages and the rules of the conversation, taken together, are called the *protocol*

www.lloseng.com

## Tasks to perform to develop client-server applications

1. Design the primary work to be performed by both client and server
2. Design how the work will be distributed
3. Design the details of the set of messages that will be sent
4. Design the mechanism for
  1. Initializing
  2. Handling connections
  3. Sending and receiving messages
  4. Terminating

## 3.5 Technology Needed to Build Client-Server Systems

### Internet Protocol (IP)

Route messages from one computer to another

Long messages are normally split up into small pieces

### Transmission Control Protocol (TCP)

Handles *connections* between two computers

Computers can then exchange many IP messages over a connection

Assures that the messages have been satisfactorily received

A host has an *IP address* and a *host name*

Several servers can run on the same host.

Each server is identified by a port number (0 to 65535).

To initiate communication with a server, a client must know both the host name and the port number

## Establishing a connection in Java

### The `java.net` package

Permits the creation of a TCP/IP connection between two applications

Before a connection can be established, the server must start *listening* to one of the ports:

```
ServerSocket serverSocket = new
    ServerSocket(port);
Socket clientSocket = serverSocket.accept();
```

For a client to connect to a server:

```
Socket clientSocket = new Socket(host, port);
```

## Exchanging information in Java

Each program uses an instance of

- `InputStream` to receive messages from the other program
- `OutputStream` to send messages to the other program
- These are found in package `java.io`

```
output = new
    OutputStream(clientSocket.getOutputStream());
```

```
input = new
    InputStream(clientSocket.getInputStream());
```

## Sending and receiving messages

without any filters

```
output.write(msg);  
msg = input.read();
```

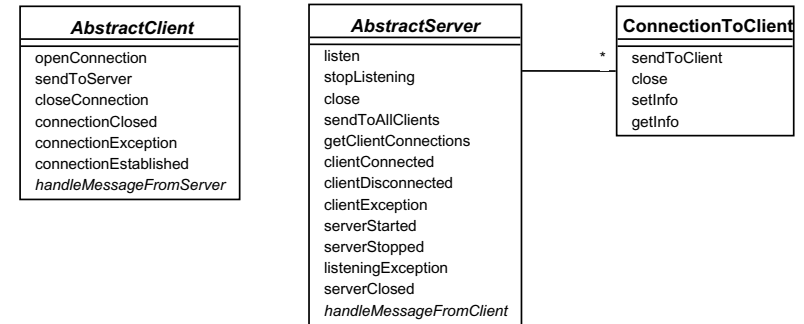
or using `DataInputStream` / `DataInputStream` filters

```
output.writeDouble(msg);  
msg = input.readDouble();
```

or using `ObjectInputStream` / `ObjectInputStream` filters

```
output.writeObject(msg);  
msg = input.readObject();
```

## 3.6 The Object Client-Server Framework (OCSF)



## Using OCSF

Software engineers using OCSF *never* modify its three classes

They:

*Create subclasses* of the abstract classes in the framework

*Call public methods* that are provided by the framework

*Override* certain slot and hook methods (explicitly designed to be overridden)

## 3.7 The Client Side

Consists of a single class: `AbstractClient`

**Must** be subclassed

- Any subclass must provide an implementation for `handleMessageFromServer`
  - Takes appropriate action when a message is received from a server

Implements the `Runnable` interface

- Has a `run` method which
  - Contains a loop that executes for the lifetime of the thread

## The public interface of `AbstractClient`

### Controlling methods:

- `openConnection`
- `closeConnection`
- `sendToServer`

### Accessing methods:

- `isConnected`
- `getHost`
- `setHost`
- `getPort`
- `setPort`
- `getInetAddress`



## The callback methods of `AbstractClient`

### Methods that *may* be overridden:

- `connectionEstablished`
- `connectionClosed`

### Method that *must* be overridden:

- `handleMessageFromServer`



## Using `AbstractClient`

Create a subclass of `AbstractClient`

Implement `handleMessageFromServer` slot method

Write code that:

- Creates an instance of the new subclass
- Calls `openConnection`
- Sends messages to the server using the `sendToServer` service method

Implement the `connectionClosed` callback

Implement the `connectionException` callback



## Internals of `AbstractClient`

Instance variables:

A `Socket` which keeps all the information about the connection to the server

Two streams, an `ObjectOutputStream` and an `ObjectInputStream`

A `Thread` that runs using `AbstractClient`'s `run` method

Two variables storing the *host* and *port* of the server





## 3.8 The Server Side

Two classes:

One for the thread which listens for new connections  
(`AbstractServer`)

One for the threads that handle the connections to clients  
(`ConnectionToClient`)



## The public interface of `AbstractServer`

Controlling methods:

- `listen`
- `stopListening`
- `close`
- `sendToAllClients`

Accessing methods:

- `isListening`
- `getClientConnections`
- `getPort`
- `setPort`
- `setBacklog`



## The callback methods of `AbstractServer`

Methods that *may* be overridden:

- `serverStarted`
- `clientConnected`
- `clientDisconnected`
- `clientException`
- `serverStopped`
- `listeningException`
- `serverClosed`

Method that *must* be overridden:

- `handleMessageFromClient`



## The public interface of `ConnectionToClient`

Controlling methods:

- `sendToClient`
- `close`

Accessing methods:

- `getInetAddress`
- `setInfo`
- `getInfo`



## Using AbstractServer and ConnectionToClient

Create a subclass of `AbstractServer`

Implement the slot method

`handleMessageFromClient`

Write code that:

- Creates an instance of the subclass of `AbstractClient`
- Calls the `listen` method
- Sends messages to clients, using:
  - the `getClientConnections` and `sendToClient` service methods
  - or `sendToAllClients`

Implement one or more of the other callback methods

www.lloseng.com

© Lethbridge/Laganière 2001

Chap. 3: Basing Development on Reusable Technology

37

## Internals of AbstractServer and ConnectionToClient

The `setInfo` and `getInfo` methods make use of a Java class called `HashMap`

Many methods in the server side are `synchronized`

The collection of instances of `ConnectionToClient` is stored using a special class called `ThreadGroup`

The server must pause from listening every 500ms to see if the `stopListening` method has been called

—if not, then it resumes listening immediately

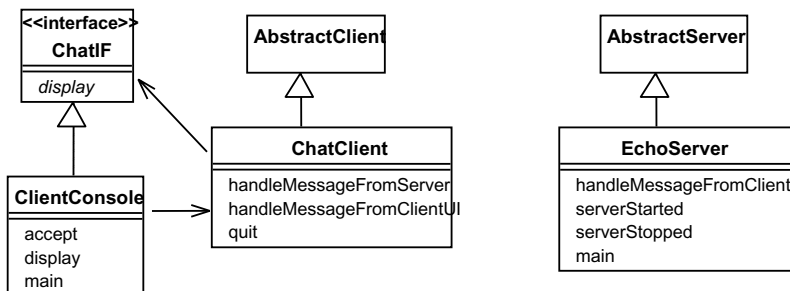
www.lloseng.com

© Lethbridge/Laganière 2001

Chap. 3: Basing Development on Reusable Technology

38

## 3.11 An Instant Messaging Application: SimpleChat



`ClientConsole` can eventually be replaced by `ClientGUI`

www.lloseng.com

© Lethbridge/Laganière 2001

Chap. 3: Basing Development on Reusable Technology

39

## The server

`EchoServer` is a subclass of `AbstractServer`

The `main` method creates a new instance and starts it

- It listens for clients and handles connections until the server is stopped

The three *callback* methods just print out a message to the user

- `handleMessageFromClient`, `serverStarted` and `serverStopped`

The *slot* method `handleMessageFromClient` calls `sendToAllClients`

- This echoes any messages

www.lloseng.com

© Lethbridge/Laganière 2001

Chap. 3: Basing Development on Reusable Technology

40

## Key code in EchoServer

```
public void handleMessageFromClient
(Object msg, ConnectionToClient client)
{
    System.out.println(
        "Message received: "
        + msg + " from " + client);
    this.sendToAllClients(msg);
}
```

## The client

When the client program starts, it creates instances of two classes:

- **ChatClient**
  - A subclass of **AbstractClient**
  - Overrides **handleMessageFromServer**
    - This calls the **display** method of the user interface
- **ClientConsole**
  - User interface class that implements the interface **ChatIF**
    - Hence implements **display** which outputs to the console
  - Accepts user input by calling **accept** in its **run** method
  - Sends all user input to the **ChatClient** by calling its **handleMessageFromClientUI**
    - This, in turn, calls **sendToServer**

## Key code in ChatClient

```
public void handleMessageFromClientUI(
String message)
{
    try
    {
        sendToServer(message);
    }
    catch(IOException e)
    {
        clientUI.display (
            "Could not send message. " +
            "Terminating client.");
        quit();
    }
}
```

## Key code in ChatClient - continued

```
public void handleMessageFromServer(Object msg)
{
    clientUI.display(msg.toString());
}
```

## 3.12 Risks when reusing technology

### Poor quality reusable components

— *Ensure that the developers of the reusable technology:*

- *follow good software engineering practices*
- *are willing to provide active support*

### Compatibility not maintained

— *Avoid obscure features*  
— *Only re-use technology that others are also re-using*

## Risks when developing reusable technology

### Investment uncertainty

— *Plan the development of the reusable technology, just as if it was a product for a client*

### The 'not invented here syndrome'

— *Build confidence in the reusable technology by:*

- *Guaranteeing support*
- *Ensuring it is of high quality*
- *Responding to the needs of its users*

## Risk when developing reusable technology – continued

### Competition

— *The reusable technology must be as useful and as high quality as possible*

### Divergence (tendency of various groups to change technology in different ways)

— *Design it to be general enough, test it and review it in advance*

## Risks when adopting a client-server approach

### Security

— *Security is a big problem with no perfect solutions: consider the use of encryption, firewalls, ...*

### Need for adaptive maintenance

— *Ensure that all software is forward and backward compatible with other versions of clients and servers*